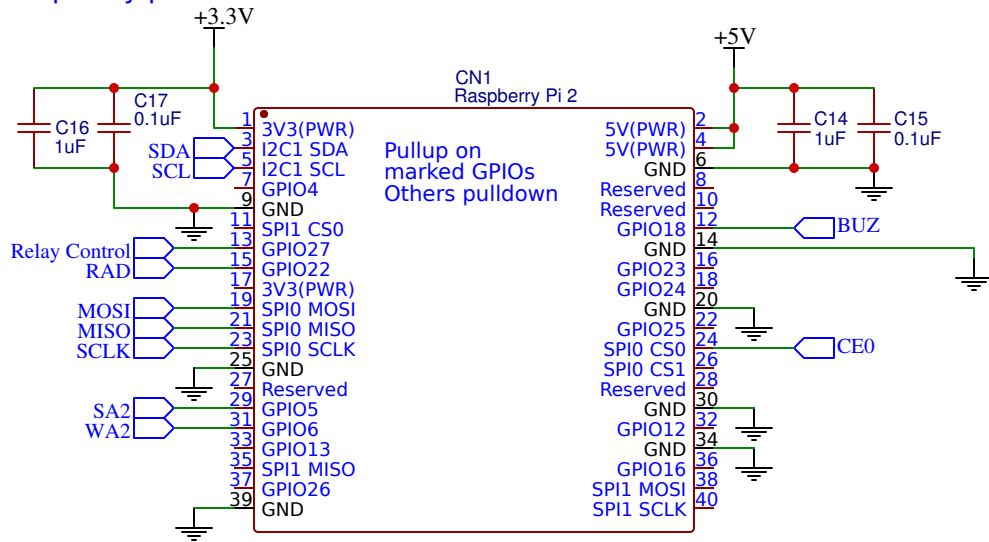
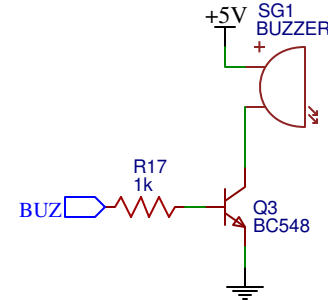


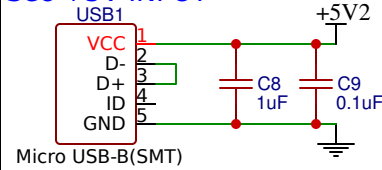
Raspberry pi



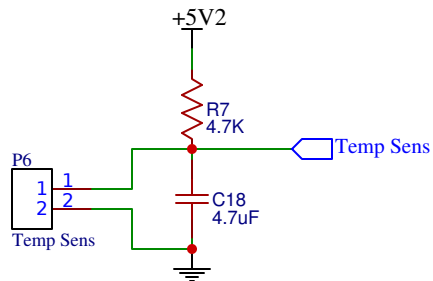
Buzzer



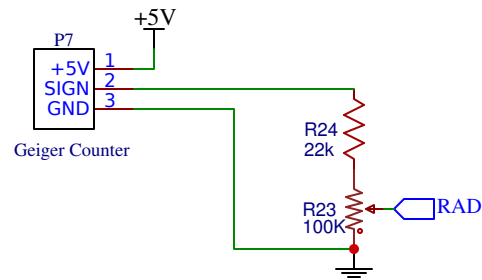
Sec +5V INPUT



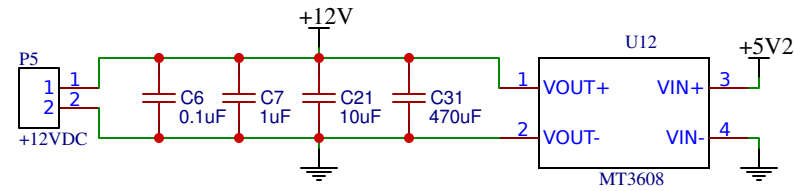
Temperature sensing circuit



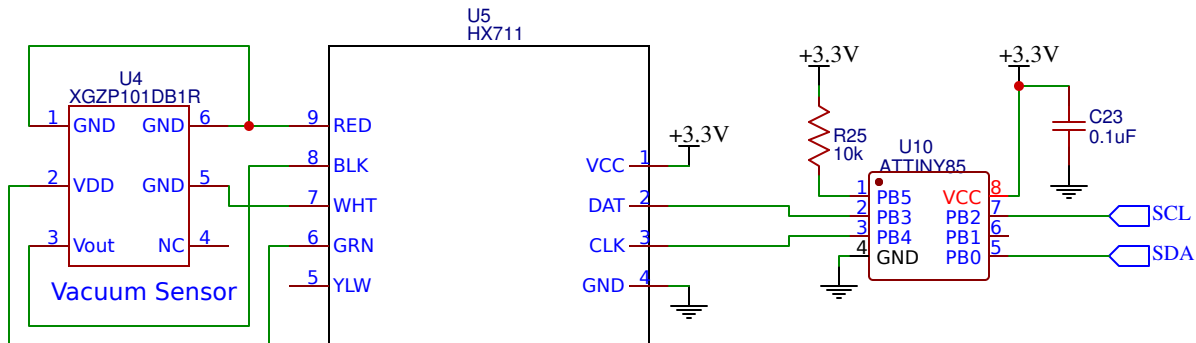
Geiger Counter input



+10V INPUT



Vacuum sensor circuit



| | | |
|----------------------------|------------------------|----------|
| TITLE: Fusor controller | | REV: 1.2 |
| Date: 2018-09-13 | Sheet: 2/2 | |
| EasyEDA V5.7.26 | Drawn By: Robin Peeten | |